



CLIPPER 6

♦ Descrizione	<i>pagina 2</i>
♦ Specifiche tecniche	<i>pagina 3</i>
♦ Layout	<i>pagine 4, 5, 6</i>
♦ Dimensioni	<i>pagina 7</i>
♦ Scheda Intellinet	<i>pagina 8</i>
♦ Connes. monomodulo	<i>pagine 9</i>
♦ Connes. multimodulo	<i>pagina 10</i>
♦ Cavo standard	<i>pagina 11</i>
♦ Cavo cross	<i>pagina 12</i>
♦ Cpu MSC1500E	<i>pagina 13</i>
♦ Hub Netgear	<i>pagina 14, 15</i>

Clipper 6

- **Unità di controllo basato su scheda PC**
- **Collegamento a PC di supervisione tramite Ethernet 10/100 Mb/s**
- **Configurazione fino a 32 assi e connessione a GreenBUS**
- **Sistema operativo Windows NT 4.0 Embedded**
- **Estensione real-time RTX**
- **Box industriale montaggio a pannello**
- **Dimensioni: 400 x 175 x 266 millimetri**



Clipper 6

- Scheda CPU basata su microprocessore AMD K6 II 500 Mhz 128 Mbytes SDRAM
- Disk on Module 32Mbytes
- Interfaccia rete Ethernet 10/100 Mb/s
- n° 1 RS-232 e n° 1 RS-485
- Backplane 6 Slot ISA
- Alimentatore ATX 250W
 - ✓ Input AC 115 / 230 V
 - ✓ Output :

+ 5 V	20 A
+ 12 V	8 A
- 5 V	0.5 A
- 12 V	0.5 A
- Configurazione fino a 32 assi analogici o digitali
- Driver GreenBUS 1 Mb/s per connessione fino a 2048 I/O su moduli remoti AlbreXX
- Temperatura operativa: 5 C° ~ 40 C°



4

3

2

D

D

C

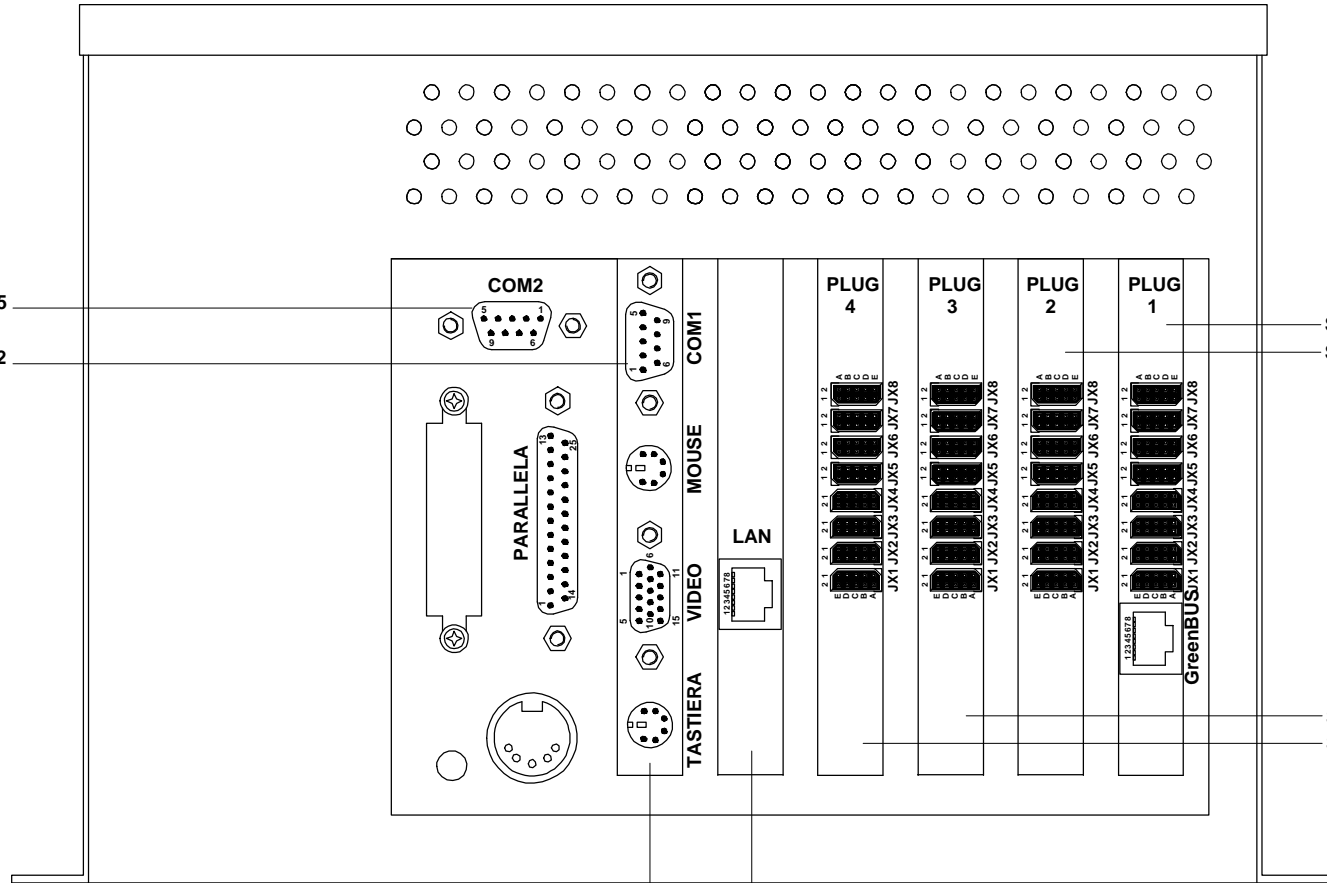
C

B

B

A

A



RS 485

RS 232

COM2

PARALLELA

COM1

MOUSE

VIDEO

TASTIERA

LAN

PLUG 4

PLUG 3

PLUG 2

PLUG 1

SCHEDA ALBNT+ALBENT
SCHEDA ALBNT/E+ALBENT

SCHEDA ALBNT/E+ALBENT
SCHEDA ALBNT/E+ALBENT

SCHEDA PC 1500E

SCHEDA INTELLINET

GreenBook

TITLE				
CLIPPER 6 FRONT				
SIZE	DATE	DWG NO.	REV.	
B	18.03.2003	CLIP6_1	—	
SCALE	1:1	ACAD	SHEET	1 OF 1

4

3

2

1

4

3

2

DWG NO.	—	SK	—	REV.	—
---------	---	----	---	------	---

D

D

C

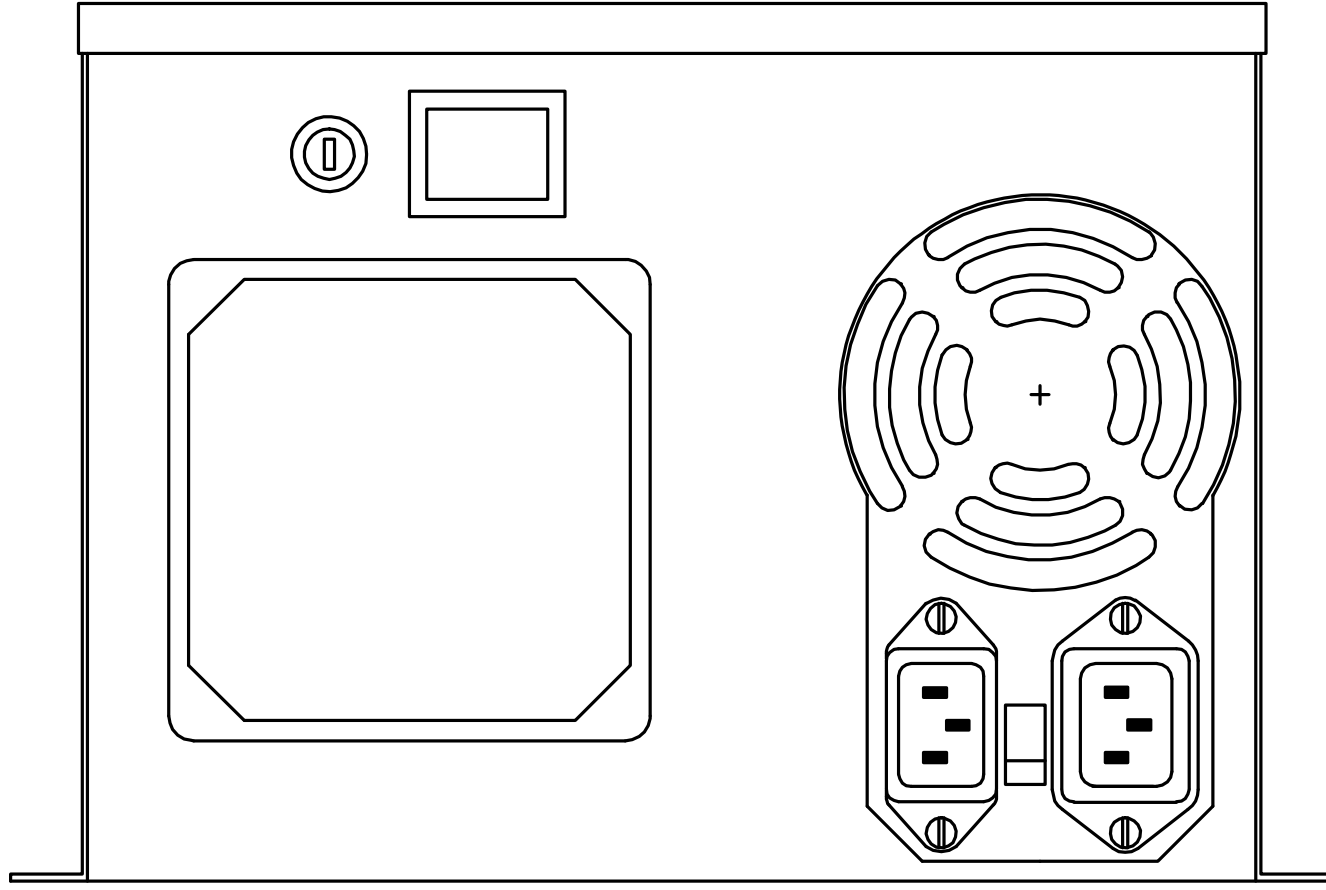
C

B

B

A

A



TITLE				
CLIPPER 6 BACK				
SIZE	DATE	DWG NO.	REV.	
B	26.3.2001	CLIP6_2	—	
SCALE	1:1	ACAD	SHEET	1 OF 1

4

3

2

1

DWG NO.	-	SH.	-	REV.	-
---------	---	-----	---	------	---

4

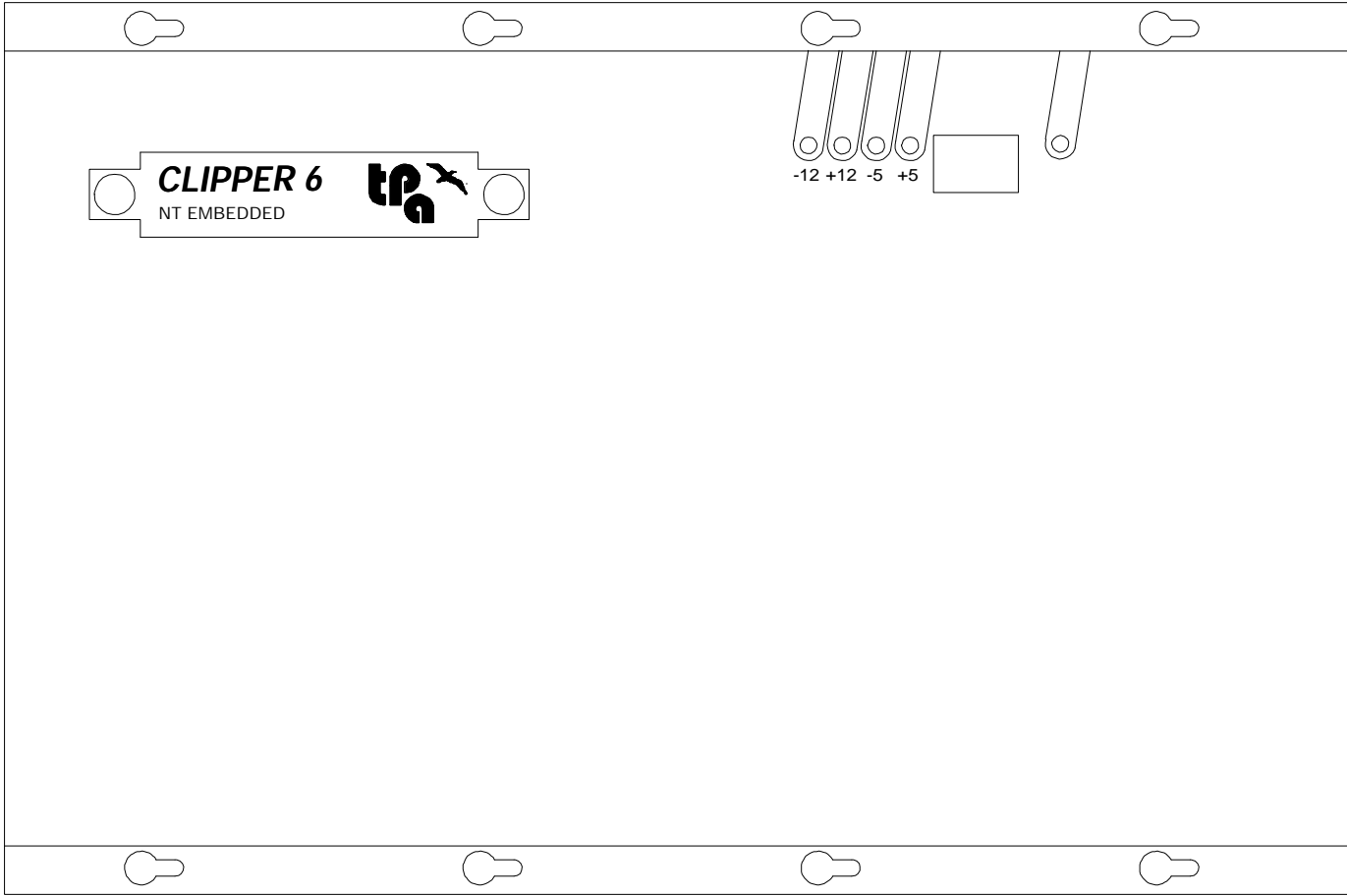
3

2



D

D



CLIPPER 6
NT EMBEDDED

-12 +12 -5 +5

C

C



B

B

A

A

TITLE				CLIPPER 6	
SIZE	DATE	DWG NO.	REV.		
C	26.3.2001	CLIP6_3	-		
SCALE	ACAD	SHEET		3 OF 3	
-	-	1		-	

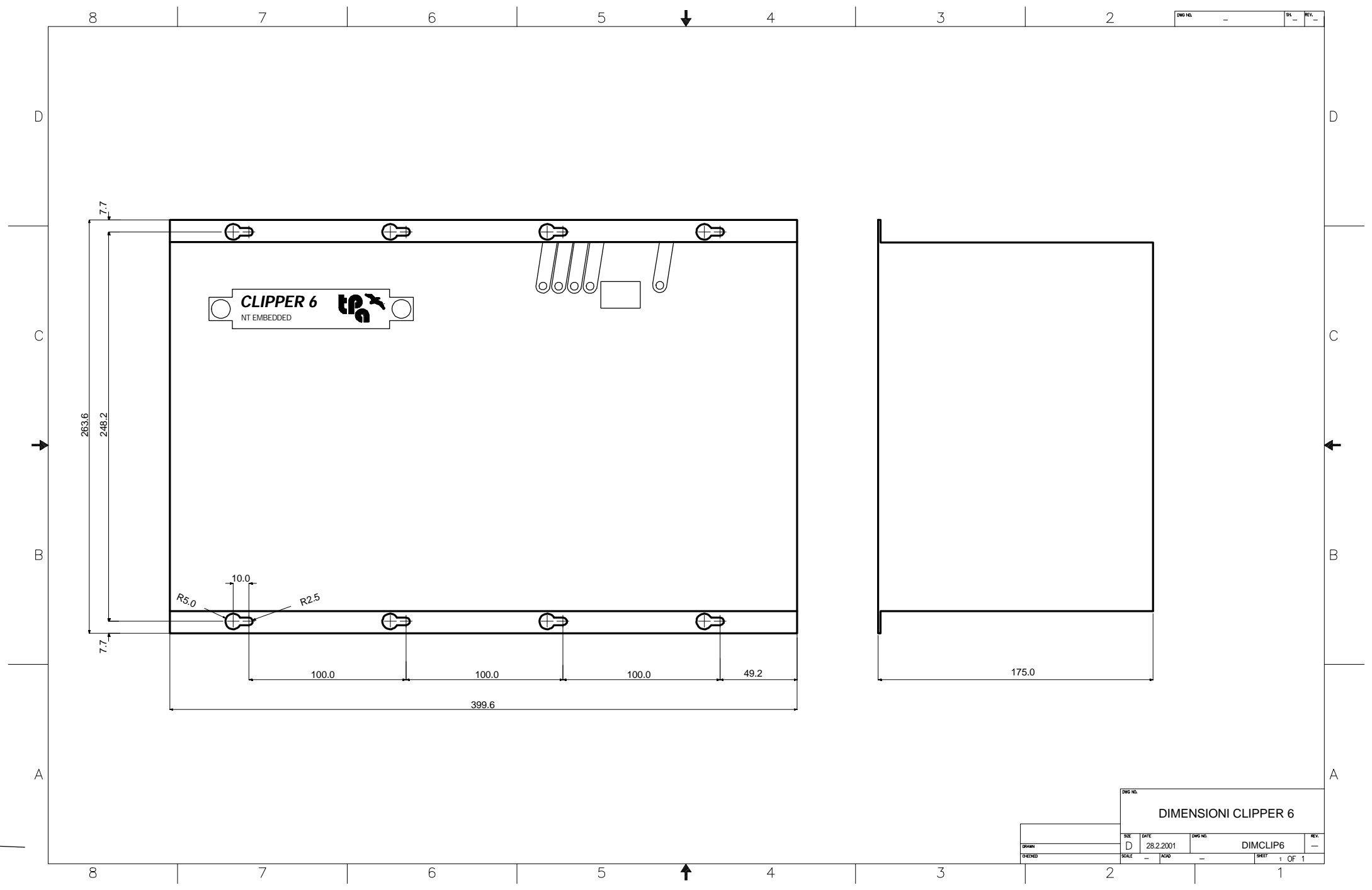
4

3

2



1

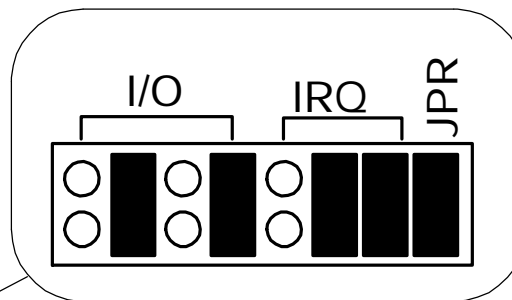


DWG NO.	-	SK	-	REV.	-
---------	---	----	---	------	---

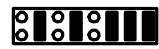
DIMENSIONI CLIPPER 6				
DESIGN	SCALE	DATE	DWG NO.	REV.
CHERNO	-	28.2.2001	-	-
SHEET			1 OF 1	

INDIRIZZO I/O: 220H

IRQ: 5



JP1



TITLE			
CARD ISA 506267			
SIZE	DATE	DWG NO.	REV.
A	30.11.2001	LANCARD	—
CHECKED	SCALE	ACAD	SHEET
	1:1	—	1 OF 1

4

3

2

D

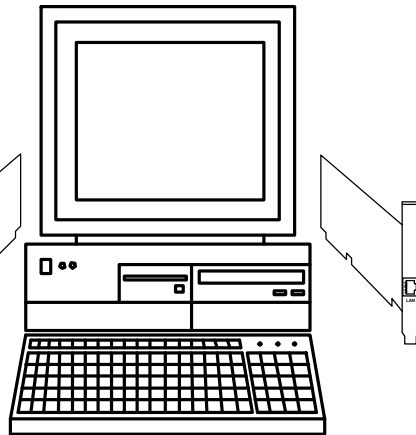
D

RETE AZIENDALE

C

B

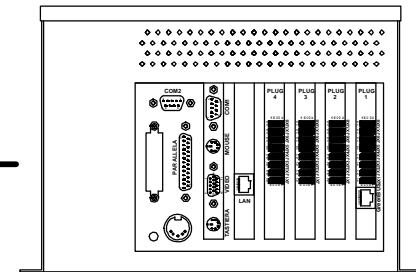
A



PC di SUPERVISIONE

CAVO CROSS

max 100 mt



TITLE				
COLLEGAMENTO MONOMODULO CLIPPER 6				
SIZE	DATE	DWG NO.	REV.	
B	18.3.2003	MONMOD6		
SCALE	ACAD	SHEET	1 OF 1	

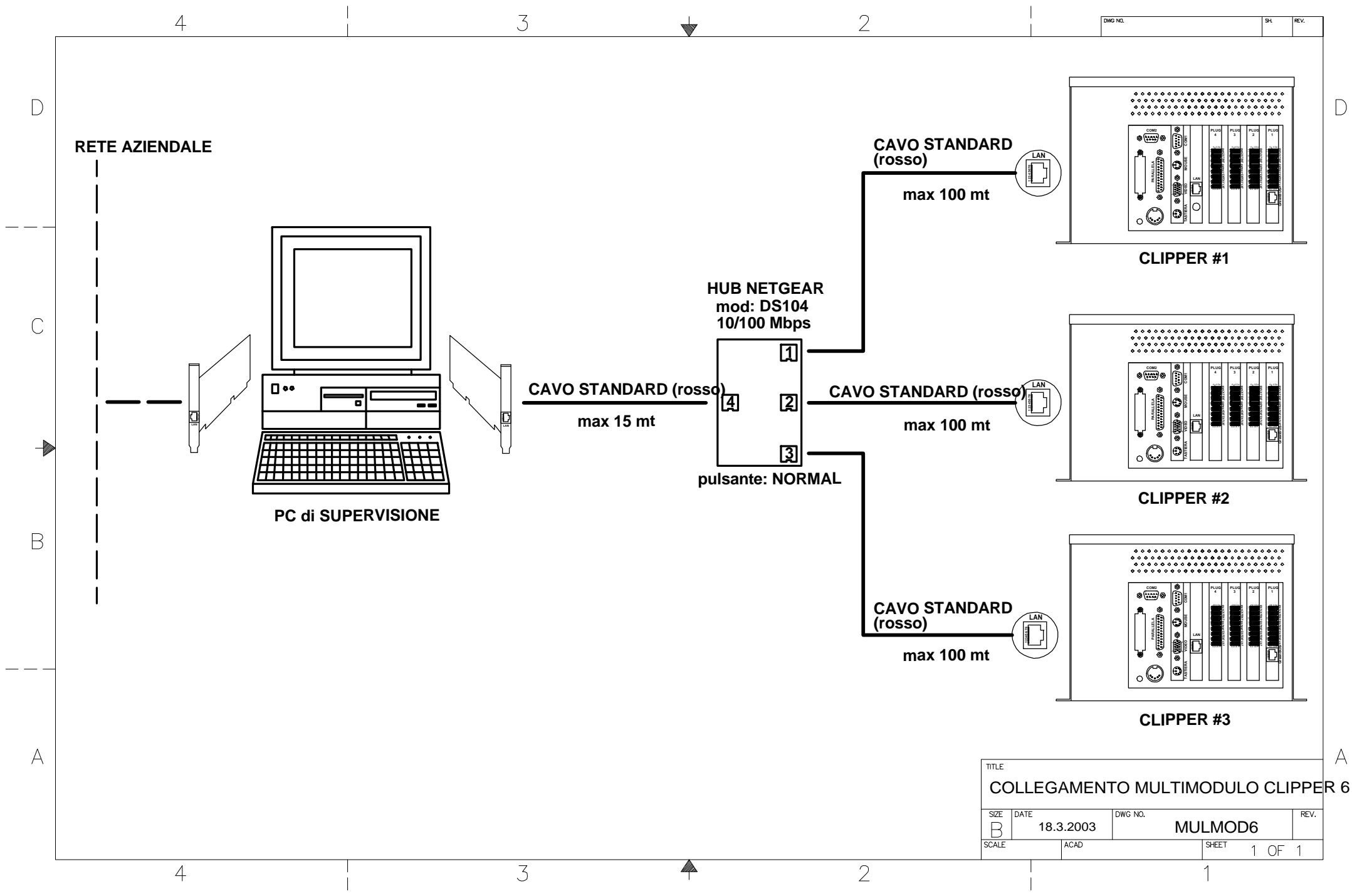
4

3

2

1

A



TITLE				
COLLEGAMENTO MULTIMODULO CLIPPER 6				
SIZE	DATE	DWG NO.	REV.	
B	18.3.2003	MULMOD6		
SCALE	ACAD	SHEET	1 OF 1	

4

3

2

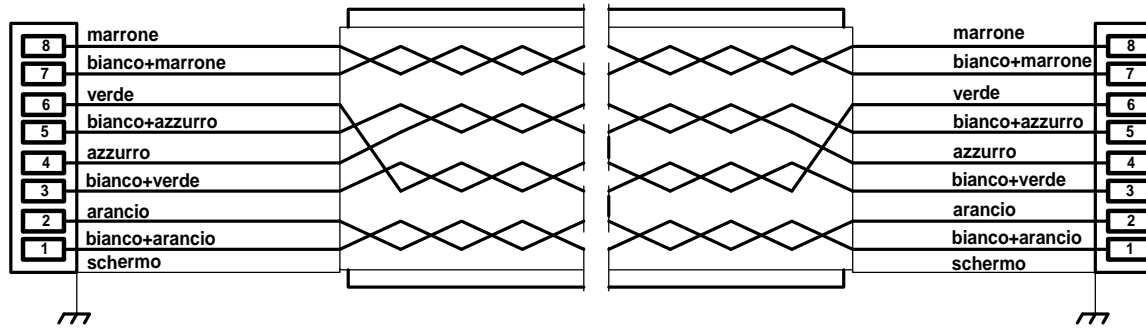
DWG NO.	SIL	REV.
---------	-----	------

D

D

C

C



su entrambi i connettore RJ45 la sequenza dei colori è conforme alla normativa T568B



connettore RJ45

cavo PATCH rosso categoria 5 flessibile e schermato STP omologato IEEE802.3 e 802.3U

testato a 100 Mbps

4 x 2 x AWG26

B

B

A

A

4

3

2

1

TITLE				CAVO RETE STANDARD			
DRAWN		SIZE	DATE	DWG NO.		REV.	
		B	15.12.2000	RETESTD			
CHECKED		SCALE	ACAD	SHEET		1 OF 1	

4

3

2

DWG NO.	SIL	REV.
---------	-----	------

D

D

C

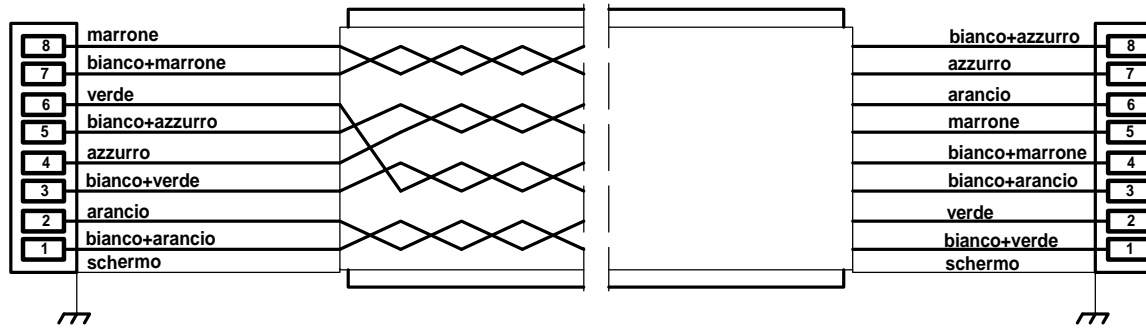
C

B

B

A

A



sul connettore RJ45 la sequenza dei colori è conforme alla normativa T568B



connettore RJ45 con cappuccio verde

**cavo PATCH categoria 5 flessibile e schermato STP
omologato IEEE802.3 e 802.3U
testato a 100 Mbps
4 x 2 x AWG26**

DRAWN		TITLE CAVO RETE CROSS		DATE 15.12.2000	DWG NO. RETECRS	REV.
CHECKED	SCALE	ACAD	SHEET	1 OF 1		

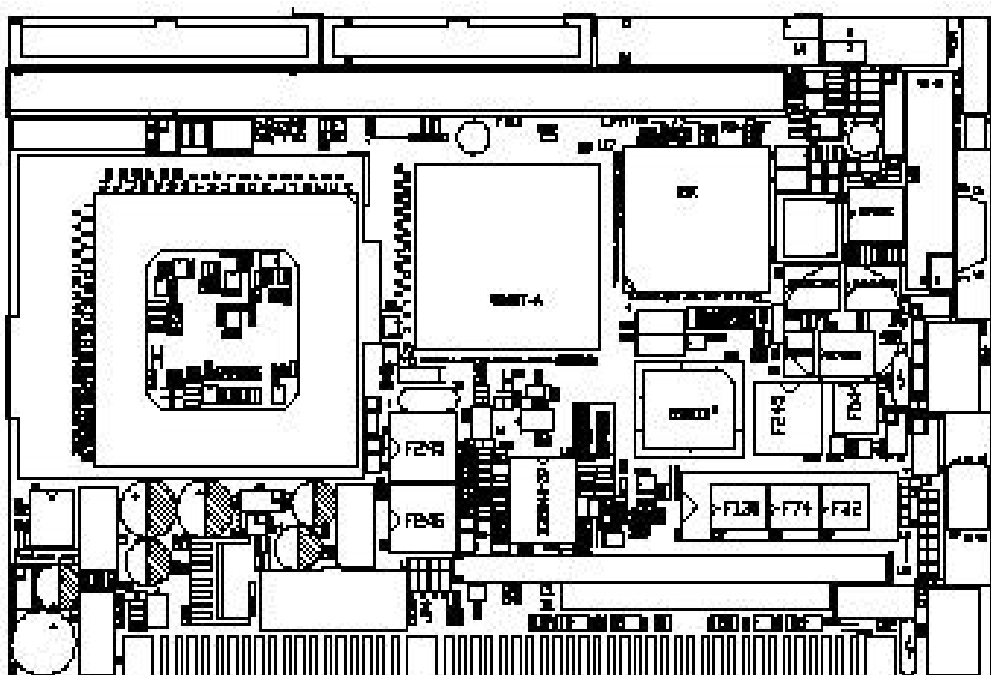
4

3

2

1

MSC1500E scheda CPU K6-II half size ISA bus



Processore: AMD K6-II / 500 Mhz con dissipatore ball bearing

Bus clock rate: 100 Mhz

Cache L2: 512Kb pipeline burst SRAM

Memoria principale: 128 Mb One 168 pin DIMM sockets

Porta seriale: 1 RS-232 e 1 RS 485

Porta parallela: 1 OCE/EPP/SPP

SSD: Disk on Module, 32Mb

Alimentazione: +5V (4.75 ~5.25V) e +12V (11.4 ~12.6V)

Dimensioni: 185 x 122 (mm) / 7.3 x 4.8 (pollici)

Temperatura operativa: 5 C° ~ 38 C° (ambiente)

Umidità relativa: 5% ~ 85% non condensata

EMI: CE classe A / FCC Classe A

MTBF: 50.000 ore



Tecnologie e Prodotti per l'Automazione

20099 Sesto S. Giovanni (MI) via Carducci, 221
tel. 0236527550 fax 022481008

NETGEAR's Dual Speed hubs— highly capable and very compact



10/100 Mbps Dual Speed Hub

DS104 DS106 DS108 DS116

NETGEAR's DS100 Series 10/100 Mbps Dual Speed Stackable Hubs connect PCs to share e-mail, Internet access, printers, and files. Their exceptional adaptability enables you to mix and match 10 and 100 Mbps PCs, servers, and peripherals on the same network with ease and without any configuration required. Every hub in the DS100 family offers multiple capabilities in a very compact and affordable unit, particularly designed for small business use.

ALERT

Auto-sensing dual-speed ports individually sense and adjust to run at 10 or 100 Mbps, allowing you to upgrade your network speed effortlessly.

SELF-RELIANT

Every port automatically operates at the proper speed, while the built-in 10 to 100 Mbps bridge automatically discovers where each user is and filters or forwards traffic accordingly.

EXPLICIT

Network ports with built-in LEDs provide clear and intuitive status. In addition, two LED bar graphs provide online status of network usage and alert you to potential network overload (excepting model DS116).

MIX & MATCH

All devices on the same network—whether connected at 10 Mbps or 100 Mbps—operate at maximum performance.

NEAT

Compact metal case design gives you an uncluttered desktop and enables wall-mount installation.



DS104/DS108 shown

Help is there when you need it!

NETGEAR provides free, 24x7

telephone and e-mail technical

support in English with selected

local language support during

office hours.

NETGEAR™

NETGEAR Inc.
 4500 Great America Parkway
 Santa Clara, CA 95054
 USA

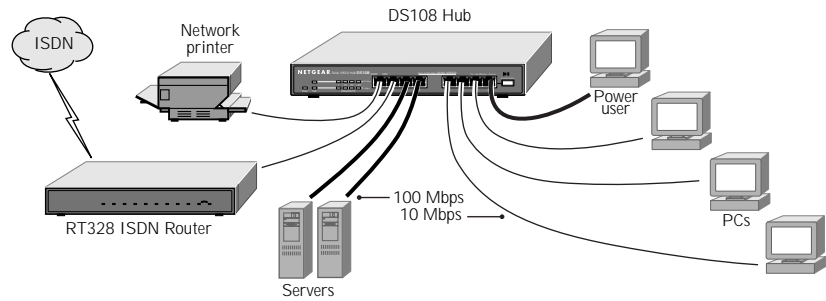
Phone: 1-888-NETGEAR
 E-mail: support@NETGEAR.com
 www.NETGEAR.com

In Country Phone Support
 (24x7 phone support in English, local language support during office hours.)

Australia	1800-787-638	Korea	00308-11-0319
Austria	00800-06384327 (00800-0-NETGEAR)	Netherlands	0800-023-0981
Denmark	808-82179	New Zealand	00800-1233-4566
Canada	1-888-NETGEAR	Norway	800-12041
Finland	0800-111-036	Singapore	001-800-1233-4566
France	0800-77-17-53	Sweden	0200-298-298
Germany	00800-06384327 (00800-0-NETGEAR)	Switzerland	00800-0638-4327 (00800-0-NETGEAR)
Hong Kong	001-800-1233-4566	United Kingdom	020-7216-0014
Japan	0120-66-5402	United States	1-888-NETGEAR
		All Other Countries	+1 801-236-8499

NETGEAR™ is a trademark of NETGEAR, Inc. Windows® is a registered trademark of Microsoft Corporation. Other brand and product names are trademarks or registered trademarks of their respective holders. Information is subject to change without notice. All rights reserved.

October 2000



TECHNICAL SPECIFICATIONS

DS104

Network Ports

4 RJ-45 ports

Dimensions

W 158 mm (6.2")

D 101 mm (4.0")

H 27 mm (1.1")

Weight

0.4 kg (.87 lb)

AC Power

10 W

DS106

6 RJ-45 ports

W 235 mm (9.3")

D 101 mm (4.0")

H 27 mm (1.1")

0.58 kg (1.3 lb)

12 W

DS108

8 RJ-45 ports

W 235 mm (9.3")

D 101 mm (4.0")

H 27 mm (1.01")

0.74 kg (1.7 lb)

13 W

DS1116

16 RJ-45 ports

W 286 mm (11.3")

D 101 mm (4.0")

H 27 mm (1.1")

0.9 kg (2.0 lb)

18 W

Standards Compliance

IEEE 802.3i 10BASE-T Ethernet

IEEE 802.3u 100BASE-TX Fast Ethernet

Built-in 10-to-100 Mbps bridge

Compatible with all popular network software, including Windows®, NetWare, and Unix

Status LEDs

Unit: power

10 Mbps segment: utilization%, collision

100 Mbps segment: utilization%, collision

Per network port: 10 or 100 Mbps operations link, receive data

Power Adapter

12VDC 1.2A (DS104/106/108)

5VDC 5.0A (DS116)

Localized plug for North America, Japan, UK, Europe, Australia

Environmental Specifications

Operating temperature: 0 to 40° C

Operating humidity: 90% maximum relative humidity, noncondensing

Electromagnetic Compliance

CE mark, commercial

FCC Part 15 Class A

EN 55 022 (CISPR 22), Class A

VCCI Class A

C-Tick

Safety Agency Approvals

(power adapter)

UL listed (UL 1950), cUL

TUV licensed (EN 60 950)

T-Mark

Warranty

Hub: 5 years

AC adapter: 1 year

PACKAGE CONTENTS

Dual speed hub

2-piece power switcher and cord

Wall-mount kit

User guide and Warranty card



D-DS100-001

NETGEAR™



CLIPPER 6 DOC

♦ Descrizione	<i>pagina 2</i>
♦ Specifiche tecniche	<i>pagina 3</i>
♦ Layout	<i>pagine 4, 5, 6</i>
♦ Dimensioni	<i>pagina 7</i>
♦ Connes. monomodulo	<i>pagine 8</i>
♦ Connes. multimodulo	<i>pagina 9</i>
♦ Cavo standard	<i>pagina 10</i>
♦ Cavo cross	<i>pagina 11</i>
♦ Cpu MSC1500E	<i>pagina 12/100</i>
♦ Hub Netgear	<i>pagina 101, 102</i>

Clipper 6 DOC

- **Unità di controllo basato su scheda PC**
- **Collegamento a PC di supervisione tramite Ethernet 10 Mb/s**
- **Configurazione fino a 32 assi e connessione a GreenBUS**
- **Sistema operativo Windows NT 4.0 Embedded**
- **Estensione real-time RTX**
- **Box industriale montaggio a parete**
- **Dimensioni: 248 x 143 x 220 millimetri**



Clipper 6 DOC

- Scheda CPU basata su microprocessore AMD K6 II 500 Mhz 128 Mbytes SDRAM
- Disk on Chip 24 Mbytes
- Interfaccia rete Ethernet 10 Mb/s
- n° 1 RS-232 e n° 1 RS-485
- Backplane 6 Slot ISA
- Alimentatore ATX 250W
 - ✓ Input AC 115 / 230 V
 - ✓ Output :

+ 5 V	20 A
+ 12 V	8 A
- 5 V	0.5 A
- 12 V	0.5 A
- Configurazione fino a 32 assi analogici o digitali
- Driver GreenBUS 1 Mb/s per connessione fino a 2048 I/O su moduli remoti AlbreXX
- Temperatura operativa: 5 C° ~ 40 C°

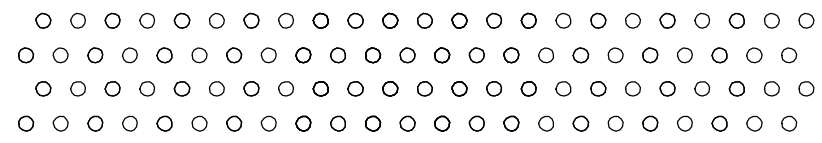


4

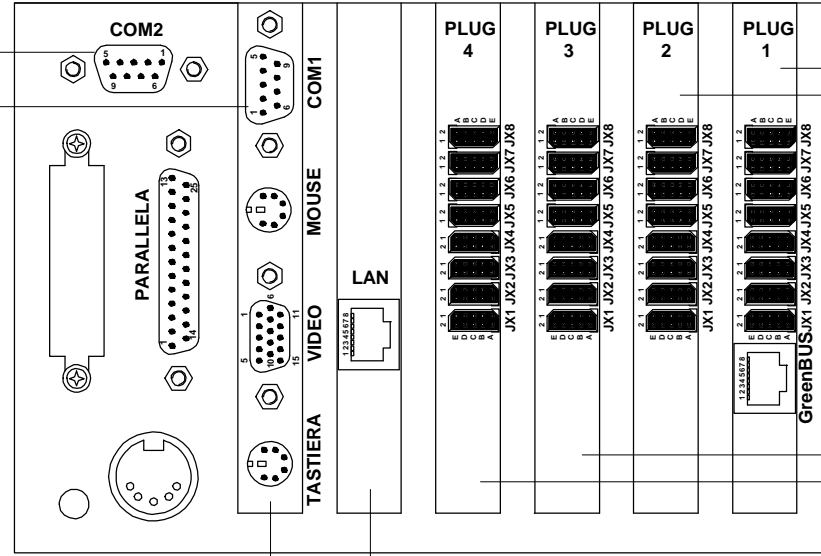
3

2

DWG NO. - SH - REV. -



RS 485
RS 232



SCHEDA ALBNT+ALBENT
SCHEDA ALBNT/E+ALBENT

SCHEDA ALBNT/E+ALBENT
SCHEDA ALBNT/E+ALBENT

SCHEDA PC 1500E
SCHEDA ETHERLINK 3C509B

D

C

B

A

D

C

B

A

TITLE			
CLIPPER 6 FRONT			
SIZE	DATE	DWG NO.	REV.
B	18.03.2003	CLIP6_1DOC	-
SCALE	1:1	ACAD	SHEET 1 OF 1

4

3

2

1

4

3

2

DWG NO.	—	SK	—	REV.	—
---------	---	----	---	------	---

D

D

C

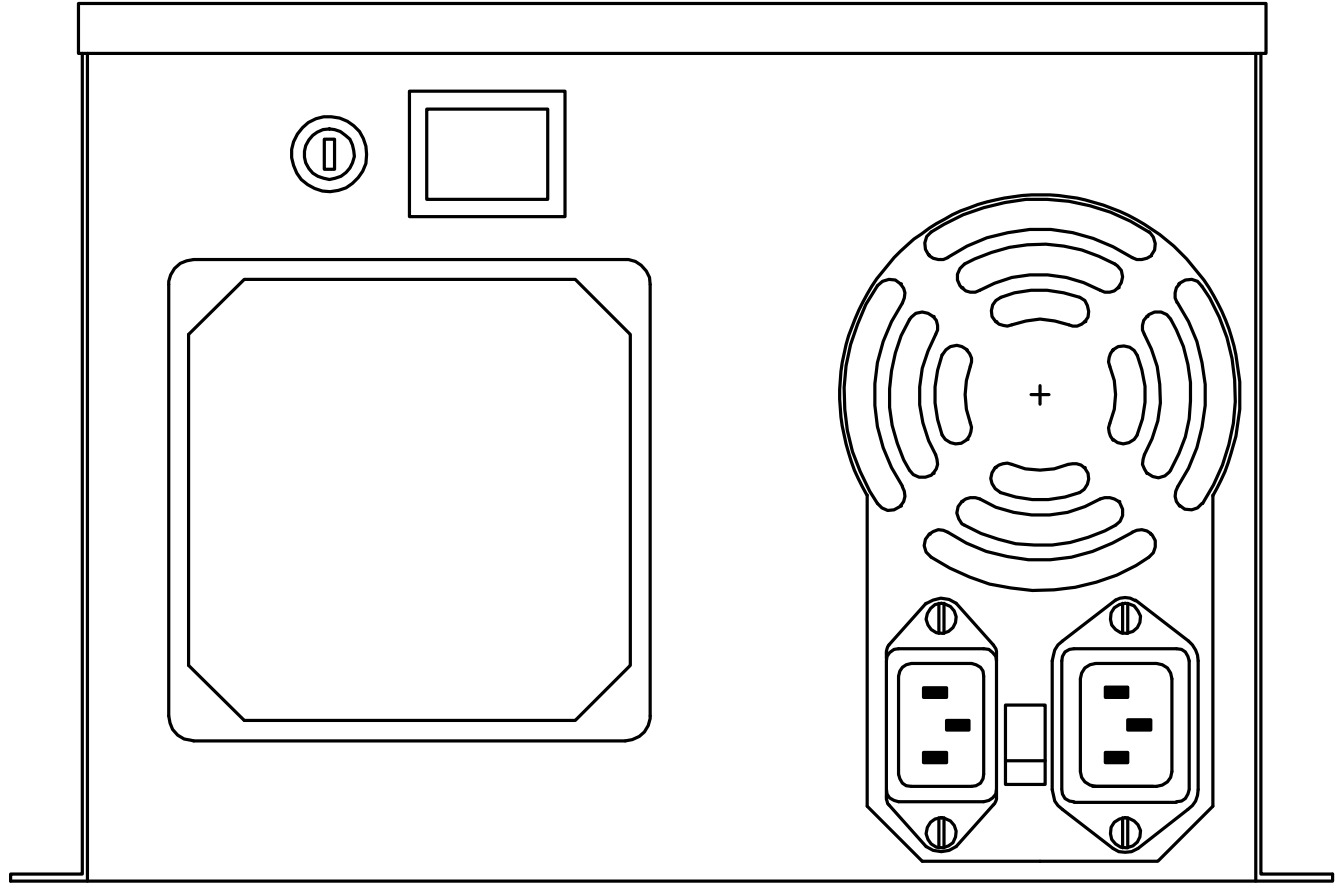
C

B

B

A

A



TITLE					
CLIPPER 6 BACK					
SIZE	DATE	DWG NO.	REV.		
B	26.3.2001	CLIP6_2	—		
SCALE	1:1	ACAD	—	SHEET	1 OF 1

4

3

2

1

DWG NO.	-	SH.	-	REV.	-
---------	---	-----	---	------	---

4

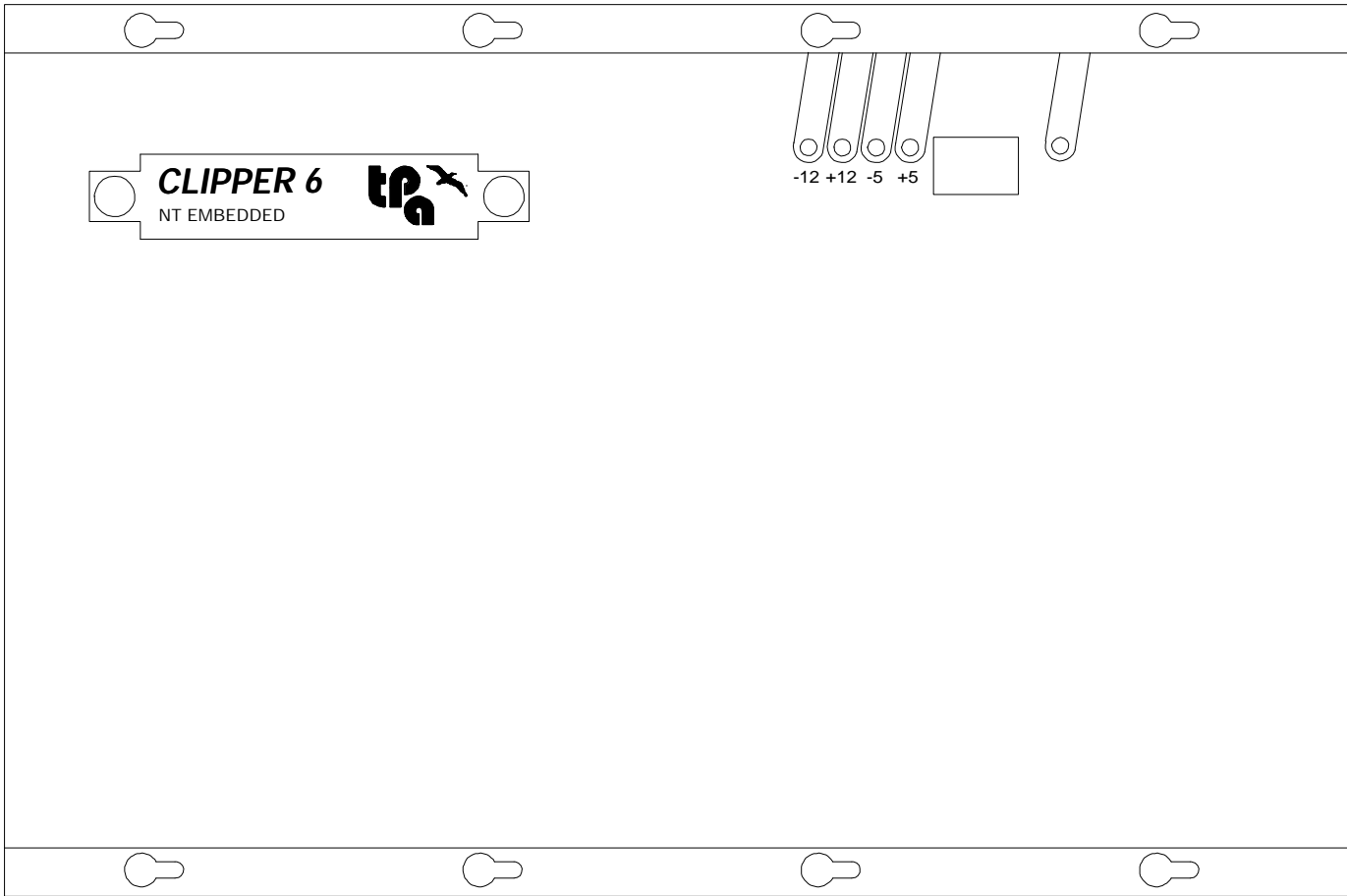
3

2



D

D



CLIPPER 6
NT EMBEDDED

-12 +12 -5 +5

C

C



B

B

A

A

TITLE				CLIPPER 6	
SIZE	DATE	DWG NO.	REV.		
C	26.3.2001	CLIP6_3	-		
SCALE	ACAD	SHEET		3 OF 3	
-	-	1		-	

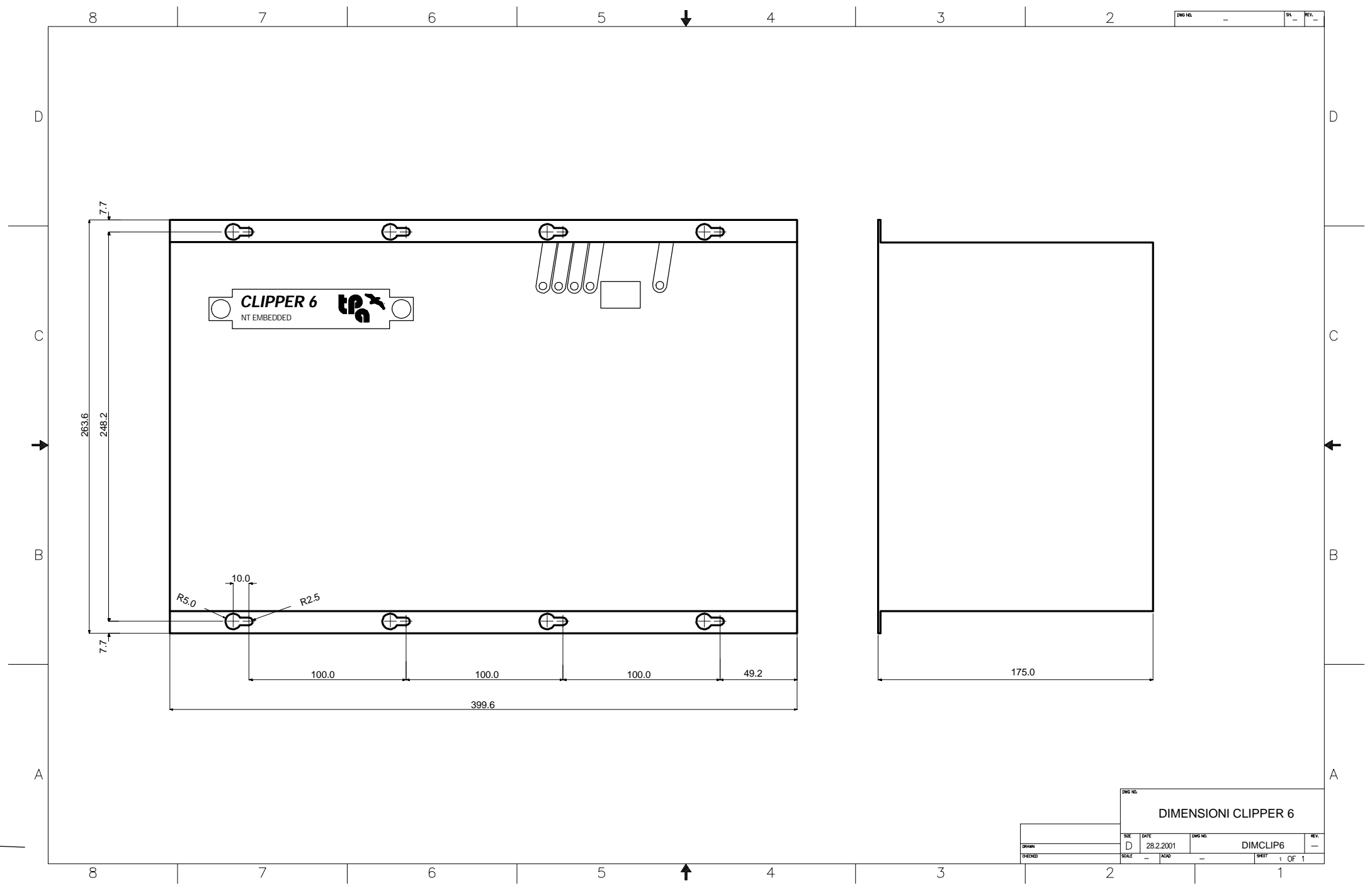
4

3

2



1



CLIPPER 6
NT EMBEDDED

DIMENSIONI CLIPPER 6			
DATE	28.2.2001	DWG NO.	DIMCLIP6
SCALE	1:1	SHEET	1 OF 1

4

3

2

D

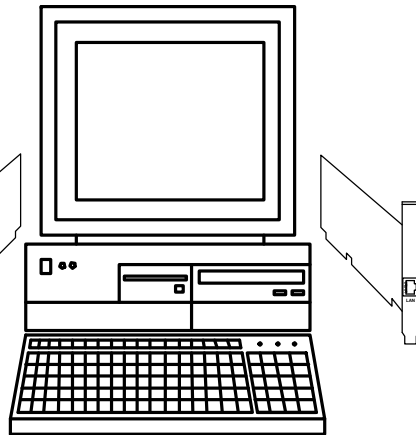
D

RETE AZIENDALE

C

B

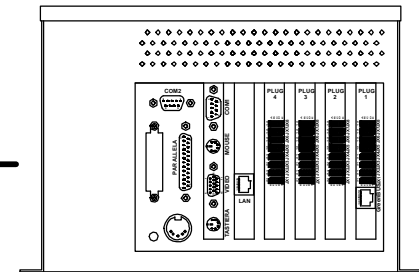
A



PC di SUPERVISIONE

CAVO CROSS

max 100 mt



TITLE				
COLLEGAMENTO MONOMODULO CLIPPER 6				
SIZE	DATE	DWG NO.	REV.	
B	18.3.2003	MONMOD6		
SCALE	ACAD	SHEET	1 OF 1	

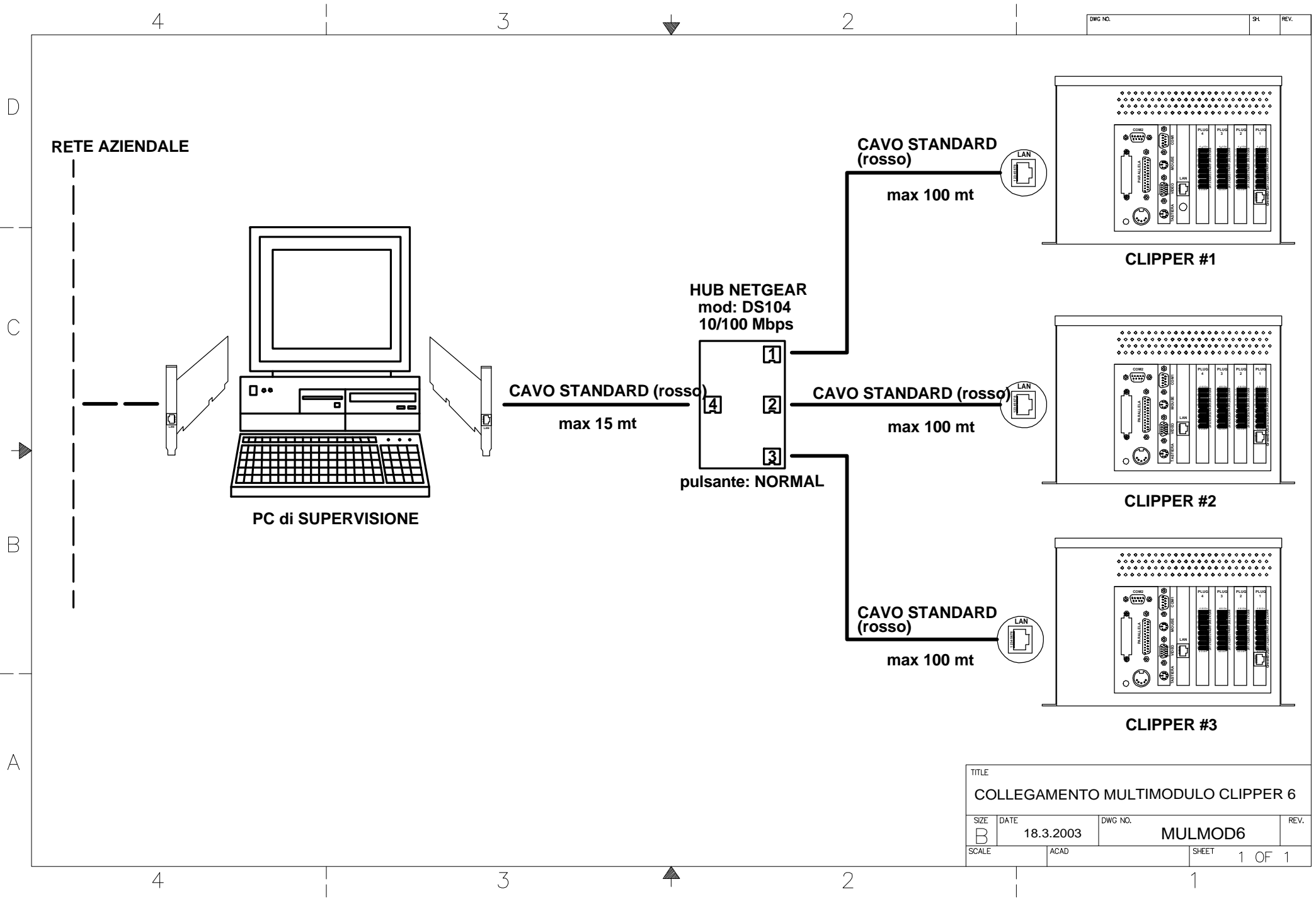
4

3

2

1

A



TITLE			
COLLEGAMENTO MULTIMODULO CLIPPER 6			
SIZE	DATE	DWG NO.	REV.
B	18.3.2003	MULMOD6	
SCALE	ACAD	SHEET	1 OF 1

4

3

2

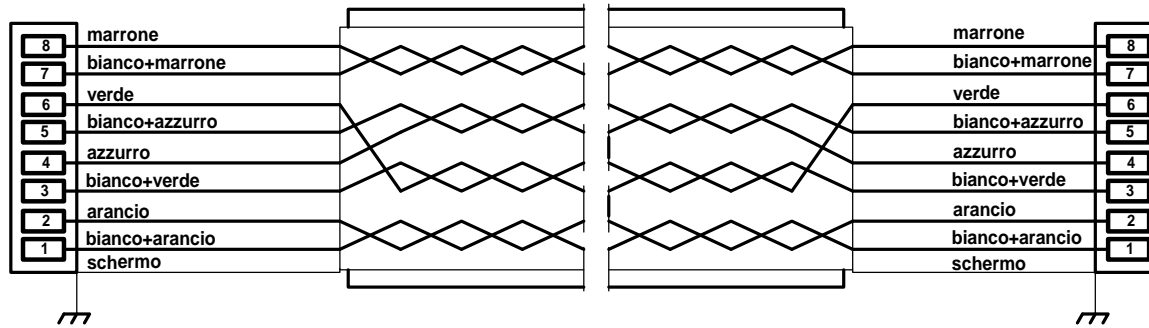
DWG NO.	SIL	REV.
---------	-----	------

D

D

C

C



su entrambi i connettore RJ45 la sequenza dei colori è conforme alla normativa T568B



connettore RJ45

cavo PATCH rosso categoria 5 flessibile e schermato STP omologato IEEE802.3 e 802.3U

testato a 100 Mbps

4 x 2 x AWG26

B

B

A

A

4

3

2

1

TITLE				CAVO RETE STANDARD			
DRAWN		SIZE	DATE	DWG NO.		REV.	
		B	15.12.2000	RETESTD			
CHECKED		SCALE	ACAD	SHEET		1 OF 1	

4

3

2

DWG NO.	SIL	REV.
---------	-----	------

D

D

C

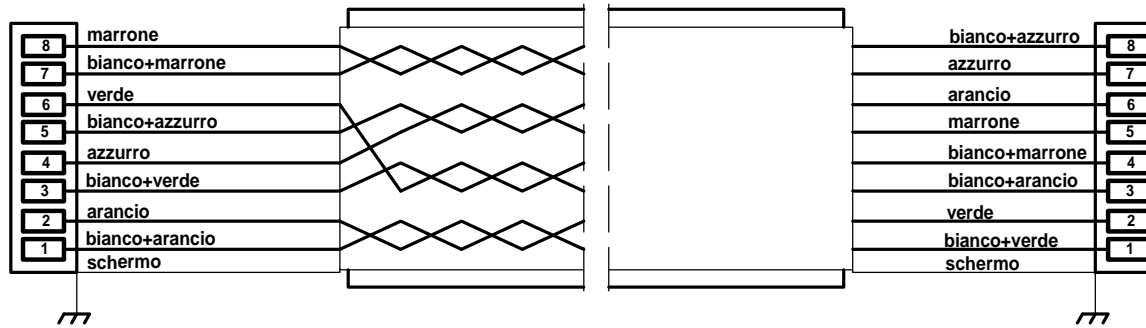
C

B

B

A

A



sul connettore RJ45 la sequenza dei colori è conforme alla normativa T568B



connettore RJ45 con cappuccio verde

**cavo PATCH categoria 5 flessibile e schermato STP
omologato IEEE802.3 e 802.3U
testato a 100 Mbps
4 x 2 x AWG26**

DRAWN		TITLE CAVO RETE CROSS		DATE 15.12.2000	DWG NO. RETECRS	REV.
CHECKED	SCALE	ACAD	SHEET	1 OF 1		

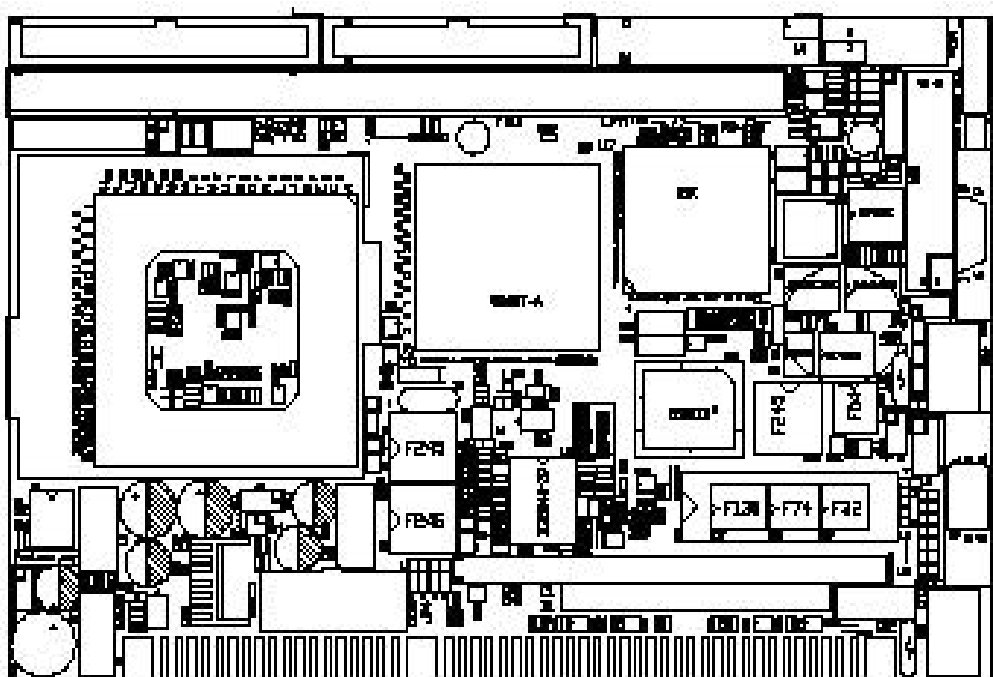
4

3

2

1

MSC1500E scheda CPU K6-II half size ISA bus



Processore:	AMD K6-II / 500 Mhz
Bus clock rate:	100 Mhz
Cache L2:	512Kb pipeline burst SRAM
Memoria principale:	64 Mb One 168 pin DIMM sockets con ECC/parità
Porta seriale:	1 RS-232 e 1 RS-485
Porta parallela:	1 OCE/EPP/SPP
SSD:	M-system Disk on chip flash disk, 24Mb
Alimentazione:	+5V (4.75 ~5.25V) e +12V (11.4 ~12.6V)
Dimensioni:	185 x 122 (mm) / 7.3 x 4.8 (pollici)
Temperatura operativa:	0 C° ~ 60 C° [32 F ~ 140 F]
Umidità relativa:	5% ~ 85% non condensata
EMI:	CE classe A / FCC Classe A
MTBF:	50.000 ore



NETGEAR's Dual Speed hubs— highly capable and very compact



10/100 Mbps Dual Speed Hub

DS104 DS106 DS108 DS116

NETGEAR's DS100 Series 10/100 Mbps Dual Speed Stackable Hubs connect PCs to share e-mail, Internet access, printers, and files. Their exceptional adaptability enables you to mix and match 10 and 100 Mbps PCs, servers, and peripherals on the same network with ease and without any configuration required. Every hub in the DS100 family offers multiple capabilities in a very compact and affordable unit, particularly designed for small business use.

ALERT

Auto-sensing dual-speed ports individually sense and adjust to run at 10 or 100 Mbps, allowing you to upgrade your network speed effortlessly.

SELF-RELIANT

Every port automatically operates at the proper speed, while the built-in 10 to 100 Mbps bridge automatically discovers where each user is and filters or forwards traffic accordingly.

EXPLICIT

Network ports with built-in LEDs provide clear and intuitive status. In addition, two LED bar graphs provide online status of network usage and alert you to potential network overload (excepting model DS116).

MIX & MATCH

All devices on the same network—whether connected at 10 Mbps or 100 Mbps—operate at maximum performance.

NEAT

Compact metal case design gives you an uncluttered desktop and enables wall-mount installation.



DS104/DS108 shown

Help is there when you need it!

NETGEAR provides free, 24x7

telephone and e-mail technical

support in English with selected

local language support during

office hours.

NETGEAR™

NETGEAR Inc.
4500 Great America Parkway
Santa Clara, CA 95054
USA

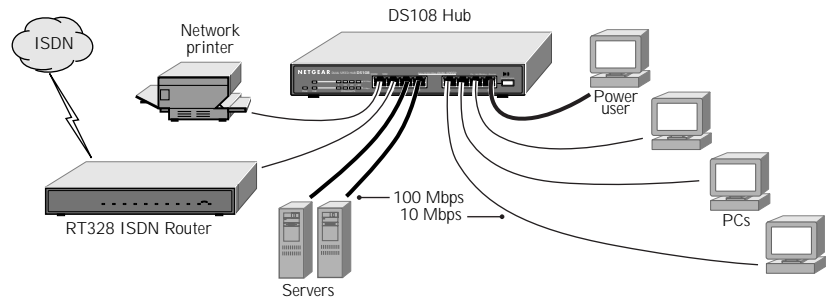
Phone: 1-888-NETGEAR
E-mail: support@NETGEAR.com
www.NETGEAR.com

In Country Phone Support
(24x7 phone support in English, local language support during office hours.)

Australia	1800-787-638	Korea	00308-11-0319
Austria	00800-06384327 (00800-0-NETGEAR)	Netherlands	0800-023-0981
Denmark	808-82179	New Zealand	00800-1233-4566
Canada	1-888-NETGEAR	Norway	800-12041
Finland	0800-111-036	Singapore	001-800-1233-4566
France	0800-77-17-53	Sweden	0200-298-298
Germany	00800-06384327 (00800-0-NETGEAR)	Switzerland	00800-0638-4327 (00800-0-NETGEAR)
Hong Kong	001-800-1233-4566	United Kingdom	020-7216-0014
Japan	0120-66-5402	United States	1-888-NETGEAR
		All Other Countries	+1 801-236-8499

NETGEAR™ is a trademark of NETGEAR, Inc. Windows® is a registered trademark of Microsoft Corporation. Other brand and product names are trademarks or registered trademarks of their respective holders. Information is subject to change without notice. All rights reserved.

October 2000



TECHNICAL SPECIFICATIONS

DS104

Network Ports

4 RJ-45 ports

Dimensions

W 158 mm (6.2")

D 101 mm (4.0")

H 27 mm (1.1")

Weight

0.4 kg (.87 lb)

AC Power

10 W

DS106

6 RJ-45 ports

W 235 mm (9.3")

D 101 mm (4.0")

H 27 mm (1.1")

0.58 kg (1.3 lb)

12 W

DS108

8 RJ-45 ports

W 235 mm (9.3")

D 101 mm (4.0")

H 27 mm (1.01")

0.74 kg (1.7 lb)

13 W

DS1116

16 RJ-45 ports

W 286 mm (11.3")

D 101 mm (4.0")

H 27 mm (1.1")

0.9 kg (2.0 lb)

18 W

Standards Compliance

IEEE 802.3i 10BASE-T Ethernet

IEEE 802.3u 100BASE-TX Fast Ethernet

Built-in 10-to-100 Mbps bridge

Compatible with all popular network software, including Windows®, NetWare, and Unix

Status LEDs

Unit: power

10 Mbps segment: utilization%, collision

100 Mbps segment: utilization%, collision

Per network port: 10 or 100 Mbps operations link, receive data

Power Adapter

12VDC 1.2A (DS104/106/108)

5VDC 5.0A (DS116)

Localized plug for North America, Japan, UK, Europe, Australia

Environmental Specifications

Operating temperature: 0 to 40° C

Operating humidity: 90% maximum relative humidity, noncondensing

Electromagnetic Compliance

CE mark, commercial

FCC Part 15 Class A

EN 55 022 (CISPR 22), Class A

VCCI Class A

C-Tick

Safety Agency Approvals

(power adapter)

UL listed (UL 1950), cUL

TUV licensed (EN 60 950)

T-Mark

Warranty

Hub: 5 years

AC adapter: 1 year

PACKAGE CONTENTS

Dual speed hub

2-piece power switcher and cord

Wall-mount kit

User guide and Warranty card



D-DS100-001

NETGEAR™